



It is hard to believe that by the time you receive this, school openings will be just around the corner! What happened to the summer?!

Today I received an interesting document from the National Rural Electric Association (NRECA), our national organization. This document provides the results of a survey regarding attitudes of rural electric members across the nation. They sent surveys to over 55,000 members across the nation and nearly 7,500 surveys were returned. I must tell you, I generally have concerns with these types of surveys because they seldom survey people I know and therefore I believe they do not reflect the “attitudes” of my circles. This survey is no different, however I do believe it shows the attitudes that we are up against and what our members believe. Maybe I am incorrect. Maybe my circles are too small. Maybe it is just the area we live. Regardless, I will share some of the highlights of this survey.



Of the returned surveys 25% were called as “Environmental Champion”. Another 29% were called “Complacent Consumer”. Only 18% were called “Cost Conscious Supporter”. Briefly, what do these titles mean? An Environmental Champion is someone who believes climate change is a serious problem and believes everyone must do their part to combat it. A Complacent Consumer is someone who does not have a strong opinion on climate change or renewable energy and will take simple steps to save money on their energy, if they are shown how. Cost Conscious Supporter is someone who is always looking for ways to save money and is satisfied with their co-op.

With the largest group being complacent, and close behind are those pushing the environmental side of the agenda, it is easy to see how the media and some elected officials are able to push things through that impact our way of life in Wyoming. This is especially true when you consider that these are other co-op members and customers from municipal and for-profit utilities. I also believe that many of these people have not educated themselves on all of the aspects of the environmental picture. I have written previously on my belief that when looking at environmental impact, one must look at the whole picture, from cradle to grave, so to speak. This means looking at the impact from the mining of material, to the building of solar panels and wind turbines, and to the disposal of the equipment, once it is beyond its useful life. What will happen to those solar panels which are depleted in 20 years or less? How much energy does it take to break these down into recyclable components? What about the turbine blades that cannot be recycled? Even the concrete foundations in the ground that do not fit the new turbines need to be considered. Why don't we see the mainstream media reporting on these aspects? I would like the whole story to be told and for the public to be educated on all aspects of the issues.

On to more local issues, which I have written about before. Our wholesale power provider, Tri-State was required to file an Electric Resource Plan (ERP) late last year with the Colorado Public Service Commission (CPUC). Your REA, along with all of the other Wyoming Tri-State members joined together to intervene in this process as the “preferred plan” could potentially impact Laramie River Station. We are continuing in this intervention process, and we have sat through many discussions with the other interveners such as the Sierra Club and the Conservation Coalition in order to attempt to find some common ground. While the process is on-going and I don't know where things will end up, one positive result of the ordeal is that Tri-State volunteered to come to Wheatland and speak with all of the Wyoming Tri-State member cooperatives in a Townhall format. This format provided an opportunity to ask questions about the ERP, CPUC, and the overall direction of Tri-State and the industry. Wheatland REA hosted this meeting at the new Agriplex 4H Building and had a very good turnout from the Wyoming members. We went for several hours discussing the issues with Duane Highley, Tri-State CEO. Overall, I think the meeting went well and we are discussing when the next Townhall will occur. One of the main reasons for this discussion is to ensure Tri-State knows where Wyoming stands and make sure we are not simply rolled into the desires of Colorado. We are doing what we can to protect the fantastic members of Wheatland REA!

As always, it is a pleasure to serve you! If you would like to see the survey I talked about, or discuss any issues impacting your REA, please stop in and let me know! Thanks for all you do and thanks to the outstanding employees at your REA! They are truly second to none!



**Watts New is a publication of  
Wheatland Rural Electric  
Association**

2154 South St.  
Wheatland, WY 82201  
www.wheatlandrea.com  
(307) 322-2125  
(800) 344-3351

**Tammy Gonzalez, Editor**

**REA SUMMER HOURS**  
Monday - Thursday  
7:00 AM - 5:30 PM  
CLOSED Friday

**OUTAGES-OPEN 24/7**

**OUTAGE PHONE NUMBERS**

(307) 322-2125  
(800) 344-3351  
24 hours a day

**STAFF**

**Donald E. Smith**  
General Manager

**Rhonda Apodaca**  
Office Manager

**Jason Wright**  
Operations Manager

**Al Teel**  
Member Services  
Manager

**BOARD OF DIRECTORS**

**Robert Brockman** 322-2220  
President

**Britt Wilson** 331-8405  
Vice President

**Jack Finnerty** 331-2100  
Secretary/Treasurer

**Sandra Hbranchak** 322-4393  
Director

**Candy Geringer** 307-351-8716  
Director

From the Office of RKA...

August 2021.... already here?!?!? This is the time of year where everyone seems to be busy with something: getting kids ready to go back to school; packing up your "adults" for college; starting harvest time; finishing those summer projects; or just enjoying the nice weather!

I hope that you enjoyed the Platte County Fair. There were so many great events to take in. In addition, if you have not seen the new Agriplex Building, I highly recommend you take the time to check it out. It is beautiful and Platte County should be very proud of this facility!

Speaking of fairs, we hope that you attend the Wyoming State Fair August 17<sup>th</sup> thru August 21<sup>st</sup>. Once again, the Wyoming co-ops will have a booth with all kinds of information, games for the kids, giveaways, demonstrations, and much more. You can even test your flexibility and agility by trying to climb a pole! The various electric co-ops around the state will be there on different days. We hope that you stop by and say "Hello"!

We just completed our annual audit and as of this writing, we have not received the final report back. We always have a quick exit meeting with the auditors after the completion of it and there were no major adjustments or deficiencies for the co-op. A final presentation will be made to the board. If they approve the audit report and findings, then we will proceed with capital credit allocations for the year 2020. In next month's article, I will talk more about the capital credit allocations and what it means to you as a member.

I want to thank everyone who sent back or dropped off their bill insert that was requesting updated telephone information. We had a great response to this. We greatly appreciate it. It really helps prepare us in case we must get ahold of you in an emergency! Thanks again!

On July 14<sup>th</sup>, a Town Hall meeting was held for the co-ops that are members of Tri-State Generation and Transmission. The meeting was held here in Wheatland and was well represented by the various Tri-State members. Mr. Duane Highly, CEO of Tri-State, led the meeting with an initial introduction and then opened the floor to questions and discussion. There was a lot of great discussion held. The most discussed topic maintaining reliability while still trying to maintain affordable rates to their members. This is very important to us, of course, because it will affect how we deliver electricity to you and what we charge you for it. Tri-State has a lot of "fires" going on between the state government and all of their new regulations, being a new member of FERC (Federal Energy Regulatory Commission), and some Colorado co-op members causing some "noise", to name just a few. It is very important that we keep on top of what Tri-State does because their decisions may ultimately affect us. We will do our best to keep you informed.

FENCE! FENCE! FENCE! Yes, there is a fence at my house! I do not know who

is more thrilled, me or the dogs! Patio ✓, Fence ✓, now what is next?!?!?

And by the way, do you know how many YouTube videos there are about walleye fishing? Many...so, so many... You would think that I would be on the professional circuit by now, but I would have to go on the circuit with someone besides my hubby! If you wonder why not, think about couples that are at a boat dock and unloading/loading their boats. There is your answer!! LOL!

Until next month...





**Back to School**

The summers seem to fly by so quickly! It was great getting to see things open up and watch everyone get reacquainted at different community events! Good Luck with the upcoming school year, let's make it a memorable, safe year!

# STEFFES

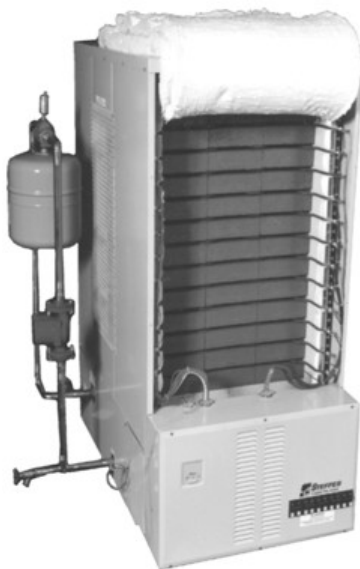
**Heating Systems**

# ETS Users

**Electric Thermal Storage (ETS)** is the process of converting off-peak electricity to heat and storing this low cost heat for use in satisfying the comfort requirements of a home or business 24 hours a day. An ETS system contains electric heating elements that lie within special, high density ceramic bricks, which store the heat.

Do you need a new furnace before winter sets in? If so... **CALL US! YOU WILL BE GLAD YOU DID!**

You could save as much as 51% over the cost of standard electric heat. Couple ETS with an air-source heat pump and save even more!



On September 1, 2021 the winter schedule begins for on-peak/off-peak hours.

**The On peak hours are:  
12:00 p.m. (noon) until  
10:00 p.m.**

**The Off-Peak hours are:  
10:00 p.m. until  
12:00 p.m. (noon)**

**Additional Off-Peak Hours:  
All day Sunday, All day Labor Day,  
Thanksgiving, Christmas and  
New Year's Day**

## Dove season starts September 1, 2021

### Remember...

**NEVER SHOOT DOVES OFF POWER LINES!**

**Broken wires are not only  
expensive to repair...**

**THEY ARE VERY DANGEROUS!**

**Don't shoot toward  
a power line!  
Good hunting is  
being safe!**





# Save Some \$\$\$

*These are some of the items you can receive a rebate for!!!\*  
(Call for Details)*

Heat Pumps: Air Source, Ground Source  
Electric Thermal Storage Heating  
LED Lamps/ Fixtures  
Energy Star Air-Conditioner  
Energy Star Clothes Washers  
Energy Star Clothes Dryers  
Heat Pump Clothes Dryers  
Energy Star Dishwashers  
Energy Star Refrigerators and Freezers  
Electric Water heaters  
Irrigation Motors  
Outdoor Electrical Equipment:

- Mowers
- Snow Blowers
- Bicycles
- Trimmers
- Chainsaws
- Pruners
- Leaf Blowers
- Power washers

\*You must file for rebates within  
120 days of purchase.



**Thank You**  
Wheatland  
Volunteer Fire  
Department for  
a spectacular  
**4th of July**  
fireworks show!

**CONGRATULATIONS to all of the 4-H kids who competed at county and state fair! It takes a lot of hard work and determination.**

**We are proud of you!!**



## 6th Annual Platte County Career Fair



September 22nd,  
Wheatland High School Gym  
10:00am-2:00pm

Over 30 Vendors  
300+ Attend Annually



[www.wheatlandrea.com](http://www.wheatlandrea.com)